

FACT SHEET ANDAMAN EMBRACE PATONG

Embrace Diversity

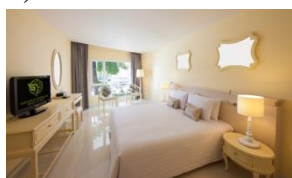
Ideally located just a few minutes' stroll from the famous white sandy Patong Beach, Andaman Embrace Patong reflects Phuket's very own Sino-Portuguese with 222 stylish guestrooms including the thatched roof bungalows in a lush peaceful ambience yet convenient walking distance to shopping and entertainment areas. A stunning pool with a swim-up bar and the in-house day spa are an indulgence in pure leisure – a perfect place to relax and unwind.

Summary of Room Types

Room Type	Size (m ²)	Total Room	Bedding & Bathroom Configuration						
			Double Room			Twin Room			Connecting
			Amount	Bath	Shower	Amount	Bath	Shower	DBL/TWN
Andaman Deluxe	35.5	134	56	41	15	78	59	19	13
Balcony Deluxe	38	61	23	9	14	38	30	8	5
Lotus Cottages	40	20	10	10	-	10	10	-	10
Junior Suite	110	5	5	5	-	-	-	-	-
Embrace Suite	110	2	2	2		-	-	-	2
Total		222	96	66	30	126	99	27	30

Accommodations

1) Andaman Deluxe:



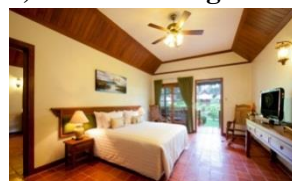
A casual mix of Sino-Portuguese interiors and modern amenities in 35.5 m² deluxe room that is a fine example of contemporary comfort enhance by warm colors, harmonically designed wooden furniture and a choice of garden or pool view.

2) Balcony Deluxe:



Its contemporary tropical décor is at one with the comfort space and intimate atmosphere that fills the 38 m² premier rooms from the private balcony overlooking the spectacular pool with a swim-up bar.

3) Lotus Cottages:



The 40 m² Thai style thatched roof cottages sit within a landscaped garden separate from the rest of the hotel, featuring private terrace with lush and peaceful surroundings including the picturesque lotus pond.

4) Junior Suites:



Artistically furnished living room in each of the contemporary style, Junior Suites with total space of 110 m² promotes relaxation and intimacy with the spacious balcony overlooking the panoramic view of tropical surroundings.

5) Embrace Suites:



Inspiringly stylish suites open onto a panoramic sea-view balcony with a private Jacuzzi, including an interconnecting deluxe room combine with contemporary décor and luxurious comfort to enable everyone from couples, friends, and families to feel like a home away from home.

Services & Facilities

Whether it is relaxation, wellness, dining or small conveniences that help with everyday living, the resort is high right there to see to a long list of needs

- Conference rooms (maximum 130 pax)
- Business center (08.00 a.m. – 09.00 p.m.)
- Babysitting services
- Tour service (10.00 a.m. – 08.00 p.m.)
- 24 hour reception
- Taxi service
- Mini mart (07.00 a.m. – 10.00 p.m.)
- Doctor on call
- Free Wi-Fi
- Retail shops
- Massage & Spa
- Laundry service
- 24 hour room service
- Parking
- Check in time: 02.00 p.m. / Check out time: 12.00 noon



Twigs Restaurant

For something truly tantalizing for breakfast, lunch and dinner, the 200 seat dining room serves up a menu of local and international fusion, mixing the best of different worlds. Open daily from 06.30 a.m. - 10.30 p.m.



Sino Bar

Andaman Embrace Patong has a simple and relaxing-feel Lobby lounge where quick coffee, cocktails, snacks or other refreshment is readily available. It is just the place to go on short notice or for a quick drink. Open daily from 10.00 a.m.-11.00 p.m.



Pool Bar

The swimming pool is the heart of Andaman Embrace Patong and its onsite atmosphere. There is no better place to have a meal or sip a cocktail, day or night. Open daily from 10.00

Recreational & Meeting Facilities

Swimming Pool

Over 570 m² of water is broken into two sections; a 400 m² area suitable for adults and 170 m² for children, all surrounded by deckchairs where guest can enjoy snacks and drinks. The swimming pool is a slice of paradise. Open daily from 08.00 a.m. - 08.00 p.m.

Fitness Center/Outdoor Sports

Exercise is not the limited to the Fitness Center. Guest can take to our garden jogging track by the Lotus Cottage as well. The fitness Center is open daily between 07.00 a.m. - 08.00 p.m.

Kids Club

Kids of 4 years of age and above will find hours of fun at the resorts Kids Club. Video games, kid kits, a playground and games are just the beginning. Open daily from 07.00 a.m.-08.00 p.m. Baby-sitting services are also available from 06.00 p.m. onwards with an extra surcharge fee.

Massage & Spa

Embrace Spa is truly tropical escape where guests can be pampered with tantalizing choices of massages and body treatment at more affordable prices. Open daily from 10:00 a.m. to 10:00 p.m.

Conference & Banquet Facilities

Our 282 m² conference room is the ideal venue for variety of business requirements from small conferences and meetings to large gatherings and banquets. Our multi-purpose and well-equipped conference rooms combined with the impeccable service and back support will always ensure that everything is perfect for your event.

The equipment and space on hand for gatherings can handle any requirements.

Conference Room	Dimensions (W x H x D)	Area (m ²)	Capacity (Maximum Person)				
			Theatre	Cocktail	Classroom	Banquet	Boardroom / U-Shape
Andaman Embrace	24 x 5.20 x 11.75	282	130	120	100	100	70
A	12 x 5.20 x 11.75	141	65	60	50	40	30
B	12 x 5.20 x 11.75	141	65	60	50	40	30
C	3.5 x 4.20 x 10.45	36.5	30	30	20	20	15

Conference Equipment:

- LCD Projector
- Microphone (standing or wireless)
- Wi-Fi Internet
- Display Boards
- Writing Material
- Sound System
- Computer
- Projection Screen
- Photocopying Service
- Flip chart



Location

Andaman Embrace Patong lies in the heart of Patong Beach City. Located only minutes of walking distance of every point to interest from shopping, nightlife, hospitals, and the famous white sandy beach of Patong City.

Points of Interest

• Patong Beach	1	minute on foot
• Jungceylon Shopping Centre	10	minutes on foot, 5 minutes by car
• Bangla Night Strip	10	minutes on foot, 5 minutes by car
• Phuket Fantasea	20	minutes by car
• Siam Niramit	25	minutes by car
• Central Festival Phuket	25	minutes by car
• Phuket Town	30	minutes by car
• Big Buddha Temple	30	minutes by car
• Chalong Temple	30	minutes by car
• Phuket International Airport	45	minutes by car

Hotel Address:

Andaman Embrace Patong

Telephone: +66 (0) 7637 0000 Facsimile: +66 (0) 7637 0001

2 Hadpatong Road, Patong Beach, Phuket 83150

E-mail: rsvn@andamanembrace.com

Website: www.andamanembrace.com