



ANDAMAN EMBRACE  
PATONG

## “Incredible Value, Unbeatable Location”

### FACT SHEET

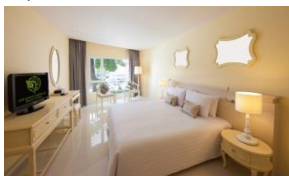
Ideally located just a few minutes' stroll from the famous white sandy Patong Beach and convenient walking distance to lots of shopping, entertainment areas and all major tourist attractions. Andaman Embrace Patong features contemporary furnishings by warm colors and harmonically designed wooden furniture with 297 stylish guestrooms in peaceful ambiance. Two stunning swimming pools with swim-up bars are an indulgence in pure leisure – a perfect place to relax and unwind.

#### Summary of Room Types

Room Type	Size (m <sup>2</sup> )	Total	Bedding & Bathroom Configuration						
			Double Room			Twin Room			Connecting
			Room	Amount	Bath	Shower	Amount	Bath	Shower
Andaman Deluxe	35.5	134	56	41	15	78	59	19	13
Balcony Deluxe	38	61	23	9	14	38	30	8	5
Premier Deluxe	40	75	52	-	52	23	15	8	8
Pool Access Suite	61	20	20	-	20	-	-	-	-
Junior Suite	110	5	5	5	-	-	-	-	-
Embrace Suite	110	2	2	2		-	-	-	2
<b>Total</b>		<b>297</b>	<b>158</b>	<b>57</b>	<b>101</b>	<b>139</b>	<b>104</b>	<b>35</b>	<b>28</b>

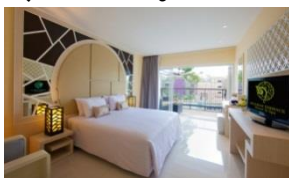
#### Accommodations

##### 1) Andaman Deluxe:



A casual mix of Sino-Portuguese interiors and modern amenities in 35.5 m<sup>2</sup> deluxe room with large windows overlooking the swimming pool and beautiful tropical ambiance offering the perfect blend of comfort and pleasure.

##### 2) Balcony Deluxe:



Its contemporary tropical décor is at one with the comfort space and intimate atmosphere that fills the 38 m<sup>2</sup> premier rooms from the private balcony overlooking the spectacular pool with a swim-up bar.

### 3) Premier Deluxe:



Offers a stunning view of the resort's new swimming pool and lush greenery with modern interior and spacious dimensions are ideal for guest traveling as a family, couple or honeymooner, rooms include an outdoor private balcony so you can enjoy and relax sitting area overlooking the sparkle Zodiac Pool.

### 4) Pool Access Suite:



Direct access to a wonderful Zodiac Pool from this spacious suite and rest in a 61 m<sup>2</sup> suite with a king-size bed, the finest amenities and a private terrace overlooking the pool. Experience the exclusive services such as a private floating breakfast area, fresh afternoon tea and more.

### 5) Junior Suite:



Artistically furnished living room in each of the contemporary style, Junior Suite with total space of 110m<sup>2</sup> promotes relaxation and intimacy with the spacious balcony overlooking the panoramic view.

### 6) Embrace Suite:



Inspiringly stylish suites open onto a panoramic sea-view balcony with a private Jacuzzi, including an interconnecting deluxe room combine with contemporary décor and luxurious comfort to enable everyone from couples, friends, and families to feel like a home away from home.

## Services & Facilities

Whether it is relaxation, wellness, dining or small conveniences that help with everyday living.

- Conference rooms (maximum 130 pax)
- Business center (08.00 a.m. – 09.00 p.m.)
- Tour service (10.00 a.m. – 08.00 p.m.)
- 24 hour reception
- Play Room
- Mini mart (07.00 a.m. – 10.00 p.m.)
- Check in time: 02.00 p.m.
- Free Wi-Fi
- Retail shops
- Laundry service
- 24 hour room service
- Free Parking
- Doctor on call
- Check out time: 12.00 noon



### **Twigs Restaurant**

For something truly tantalizing for breakfast, lunch and dinner, the 200 seat dining room serves up a menu of local and international cuisine, mixing the best of different worlds. Open daily from 06.30 a.m. - 10.30 p.m.



### **Sino Bar & Restaurant**

Andaman Embrace Patong has a simple and relaxing-feel Lobby lounge where quick coffee, cocktails, snacks or other refreshment is readily available. It is just the place to go on short notice or for a quick drink. Open daily from 10.00 a.m.-11.00 p.m.



### **The Pool Bar**

The swimming pool is the heart of Andaman Embrace Patong and its onsite atmosphere. There is no better place to have a meal or sip a cocktail, day or night. Open daily from 10.00 a.m.-08.00 p.m.



### **Swimming Pool**

Over 570 m<sup>2</sup> of water is divided into two sections; a 400 m<sup>2</sup> area suitable for adults and 170 m<sup>2</sup> for children, all surrounded by deckchairs where guest can enjoy snacks and drinks. The swimming pool is a slice of paradise. Open daily from 08.00 a.m. - 08.00 p.m.



### **Fitness Center/Outdoor Sports**

Exercise is not the limited to the Fitness Center. The Fitness Center is open daily between 07.00 a.m. - 08.00 p.m.



### **Play room**

Kids of 4 years of age and above will find hours of fun at the resort's Play room. Kid kits, a playground and games are just the beginning. Open daily from 07.00 a.m.-08.00 p.m. Baby-sitting services are also available from 06.00 p.m. onwards with an extra fee.



### **Conference & Banquet Facilities**

Our 282 m<sup>2</sup> conference room is the ideal venue for variety of business requirements from small conferences and meetings to large gatherings and banquets. Our multi-purpose and well-equipped conference rooms combined with the impeccable service and back support will always ensure that everything is perfect for your event.

**The equipment and space on hand for gatherings can handle any requirements.**

Room	Dimensions (W x H x D)	Area (m <sup>2</sup> )	Capacity (Maximum Person)				
			Theatre	Cocktail	Classroom	Banquet	Boardroom/ U-Shape
Andaman Embrace	24 x 5.20 x 11.75	282	130	120	100	100	70
A	12 x 5.20 x 11.75	141	65	60	50	40	30
B	12 x 5.20 x 11.75	141	65	60	50	40	30
C	3.5 x 4.20 x 10.45	36.5	30	30	20	20	15

### **Conference Equipment**

- LCD Projector
- Standing Microphone
- Wi-Fi Internet
- Display Boards
- Writing Material
- Standard Sound System
- Projection Screen
- Photocopying Service
- Flip chart

### **Location**

Andaman Embrace Patong lies in its relaxing ambiance of Patong Beach City. Located only 2 minutes of walking distance of every point of interest from shopping, nightlife, hospitals, and the famous white sandy Patong Beach.

### **Points of Interest**

- Patong Beach 2 minutes on foot
- Jungceylon Shopping Centre 10 minutes on foot, 5 minutes by car
- Central Patong Phuket 10 minutes on foot, 5 minutes by car
- Bangla Night Strip 10 minutes on foot, 5 minutes by car
- Phuket Fantasea 20 minutes by car
- Siam Niramit 25 minutes by car
- Central Festival Phuket 25 minutes by car
- Phuket Town 30 minutes by car
- Big Buddha Temple 30 minutes by car
- Chalong Temple 30 minutes by car
- Phuket International Airport 45 minutes by car

### **Hotel Address**

Andaman Embrace Patong  
 2 Hadpatong Road, Patong Beach, Phuket 83150  
 Telephone : +66 (0) 7637 0000  
 Facsimile : +66 (0) 7637 0001  
 E-mail : [INFO@AndamanEmbrace.com](mailto:INFO@AndamanEmbrace.com)  
 Website : [www.AndamanEmbrace.com](http://www.AndamanEmbrace.com)