



ANDAMAN EMBRACE
PATONG



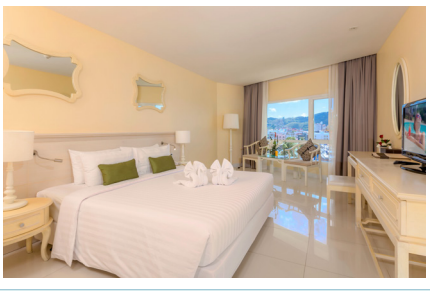
“INCREDIBLE VALUE, UNBEATABLE LOCATION” FACT SHEET

Ideally located just a few minutes' stroll from the famous white sandy Patong Beach and convenient walking distance to lots of shopping, entertainment areas and all major tourist attractions. Andaman Embrace Patong features contemporary furnishings by warm colors and harmonically designed wooden furniture with 297 stylish guestrooms in peaceful ambiance. Two stunning swimming pools with swim-up bars are an indulgence in pure leisure – a perfect place to relax and unwind.

ROOM TYPES

Room Type	Size (sqm.)	Total Number of Room	Bedding & Bathroom Configuration						
			Double Bed			Twin Bed			Connecting
			Bathtub	Shower	Total	Bathtub	Shower	Total	DBL/TWN
Andaman Deluxe	35.5	134	41	15	56	58	20	78	13
Premier Deluxe	40	75	-	52	52	15	8	23	8
Elite Balcony	38	61	13	14	27	26	8	34	5
Pool Access Suite	61	20	-	20	20	-	-	-	-
Junior Suite	110	5	5	-	5	-	-	-	-
Embrace Suite	110	2	2	-	2	-	-	-	2
Total		297	61	101	162	99	36	135	28

ACCOMMODATIONS



ANDAMAN DELUXE

DOUBLE | TWIN BED (SIZE : 35.5 SQM.)



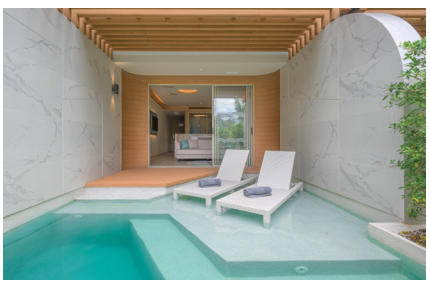
PREMIER DELUXE

DOUBLE | TWIN BED (SIZE : 40 SQM.)



ELITE BALCONY

DOUBLE | TWIN BED (SIZE : 38 SQM.)



POOL ACCESS SUITE

ONLY DOUBLE BED AVAILABLE (SIZE : 61 SQM.)



JUNIOR SUITE

ONE BEDROOM + ONE LIVING ROOM
(SIZE : 110 SQM.)



EMBRACE SUITE

TWO - BEDROOM SUITE (SIZE : 110 SQM.)

SERVICES & FACILITIES



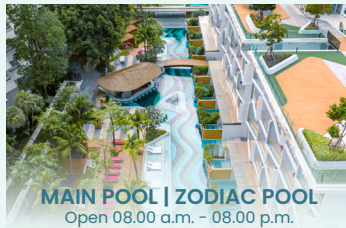
TWIGS RESTAURANT

Open 06.30 a.m. - 10.30 p.m.



SINO BAR

Open 10.00 a.m. - 11.00 p.m.



MAIN POOL | ZODIAC POOL

Open 08.00 a.m. - 08.00 p.m.



GAZEBO BAR | POOL BAR

Open 10.00 a.m. - 08.00 p.m.



FITNESS CENTER

Open 07.00 a.m. - 08.00 p.m.



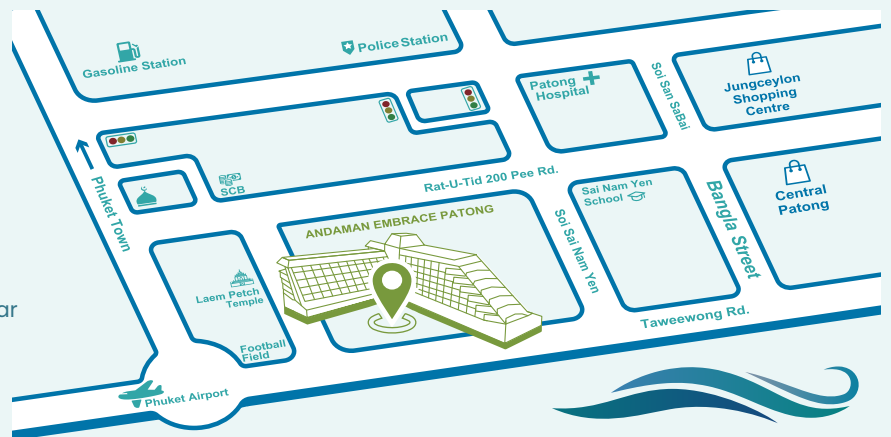
PLAY ROOM

Open 07.00 a.m. - 08.00 p.m.

- Free Wi-Fi
- Retail shops
- Laundry service
- Room service
- Mini mart
- Conference rooms (maximum 130 persons)
- Business center
- Tour service
- 24 hour reception
- Free parking
- Doctor on call

LOCATION

- **Patong Beach** 2 minutes by walk
- **Jungceylon Shopping Centre** 10 minutes by walk, 5 minutes by car
- **Bangla Road (Night Walking Street)** 10 minutes by walk, 5 minutes by car
- **Andamanda Phuket Waterpark** 20 minutes by car
- **Phuket Fantasea** 20 minutes by car
- **Carnival Magic** 20 minutes by car
- **Phuket International Airport** 45 minutes by car



PATONG BEACH

Andaman Embrace Patong

2 Hadpatong Road, Patong Beach, Kathu, Phuket 83150 THAILAND
TEL : +66 76 370 000 FAX : +66 76 370 001

- www.AndamanEmbrace.com
- [Andaman Embrace Patong](https://www.facebook.com/AndamanEmbracePatong)
- [andamanembrace_hkt](https://www.instagram.com/andamanembrace_hkt)
- [AndamanEmbracePatong](https://www.youtube.com/AndamanEmbracePatong)